

MRF TURE

Winter 2020

The Quarterly Newsletter of the Manitowoc County Recycling Center



IN THIS ISSUE

| | |
|-------------------------------|---|
| RECYCLING DEPOT CONTAMINATION | 1 |
| DRUG DISPOSAL PROGRAM RESULTS | 2 |
| CHRISTMAS LIGHTS | 3 |
| HOLIDAY TREE COMPOSTING | 3 |
| TREE FOR A TREE | 3 |
| LAMP RECYCLING | 4 |
| TIRE COLLECTION RESULTS | 4 |
| RECYCLING DEPOT GUIDELINES | 5 |
| ELECTRONIC NEWSLETTER REQUEST | 5 |
| SCRAP METAL DUMPSTER | 5 |

RECYCLING DEPOT CONTAMINATION

The Manitowoc County Recycling Center is asking residents using our drop off site to help clean up recycling. While we understand that a small percentage of the people visiting the site are causing most of the contamination, we need to ask that you turn a critical eye to your habits. If you are following our guidelines then Thank You very much, we appreciate that!

We will focus on plastics in this article, although contamination with paper and glass is common too. Plastics are often confusing and easy to generalize them into one category when there are 1000s of different types.

The plastic recycling containers are only for accepted items: **#1 and #2 bottles and jars**. Do not place any other plastics in these bins, they are not for your plastic garbage. Common contaminants include: broken totes, buckets, barrels, plastic bags, chip bags, dog food bags, cookie trays, Tupperware, #3-#7 plastics, hoses, clamshells, deli trays, to-go containers, Styrofoam, hangers, crates, cool whip containers, plastic toys, flower pots and many others.



If you are transporting your recyclables in a plastic bag, it should be emptied into the recycling container, then take the bag home with you. We recommend reusing it or recycling it at a retail collection site, but if it is soiled it should go in your household trash.

If you have items that we do not accept they should be taken home with you and put in your trash. Do not place them outside the containers, this is considered illegal dumping and there is an ordinance against it. Also, this behavior encourages other people to do the same thing. These items can also contribute to litter in our ditches and fields. Most of this litter is caught in our debris fence and cleaned out by staff.

Recycling contamination is an issue. Whether it is at our recycling depot, or your curbside hauler, or a municipal drop off site, be sure to follow the recycling guidelines. They are there to make these programs and services run their best. Not following the guidelines increase the cost of recycling, these items must be picked out, often by hand, and sent to the landfill. This detracts from the time staff spend sorting and baling plastics for sale on the recycling markets.



If you are unsure about an item, call or visit us, and we can clarify it for you.

Mission Statement

To provide materials recycling and recovery services to the citizens of Manitowoc County and to keep the public informed about recycling issues.



Manitowoc County Recycling Center & Compost Sites
3000 Basswood Road, Manitowoc WI
920-683-4333
Manitowocounty.com/recyclingcenter



DRUG DISPOSAL PROGRAM RESULTS

2019 was another good year for the drug collection program. Throughout the year a total of 3 collection events were held and drop boxes were available at Manitowoc City Police Department, Two Rivers Police Department and the Sheriff's Office. A total of 1,420.6 pounds of medications were turned in. This included over the counter medications, dietary supplements, prescription medications and pet medications. It did not include pill bottles or packaging. The Drug Collection Program started in 2006 and has since collected 17,386.3 pounds of medications.

Unused medications present public health and safety concerns within the community. Pharmaceutical chemicals can also show up in the water supply, partly due to the practice of flushing them down the toilet or throwing them in the trash. Medications may lay around the house for weeks or even years. This is often when medications are stolen from relatives and acquaintances. Stolen medications wind up on the illegal drug market where they are abused and have resulted in unintended poisonings as well as overdoses and addictions in our community.

All the collected medications were sent to the Wisconsin Department of Justice's Drug Take Back Program. They reported collecting a total of 116,817 pounds of medications in Wisconsin this year. From the moment medications are turned in they are handled, stored, and transported by law officers until they are destroyed at a Hazardous Waste incinerator that is regulated by the United States Environmental Protection Agency. This type of regulated incineration uses high temperatures and pollution controls to safely incinerate these substances.

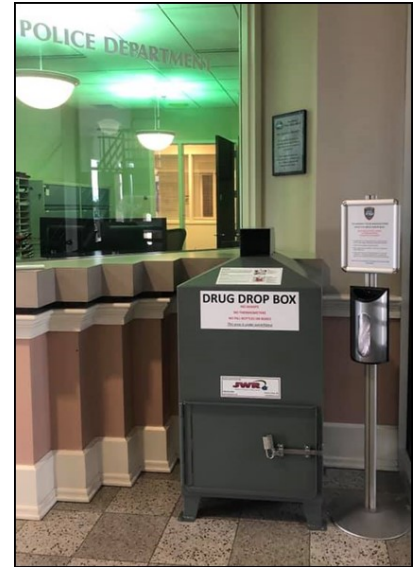
Permanent Dropbox Locations:

- Manitowoc County Sheriff's Office: 1025 South 9th St, Manitowoc, 8am—4:30pm M-F
- Manitowoc City Police Dept: 910 Jay Street, Manitowoc, 7:30am—4:30pm M-F
- Two Rivers Police Dept: 1717 East Park Street, Two Rivers, 8am—4:30pm M-F

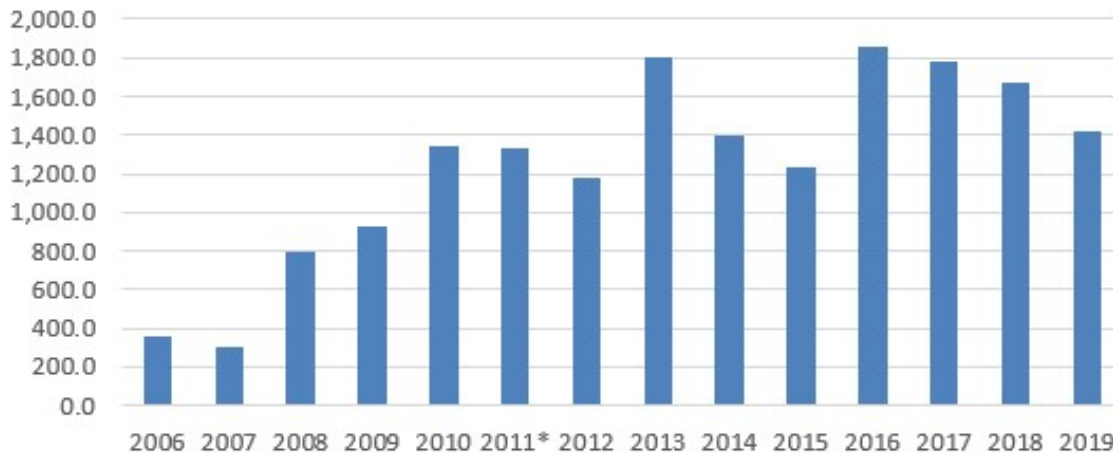
Directions:

Remove pills from original container and put them in a sealed "ziplock" style bag that is quart size or smaller before placing in the drug drop box. Empty pill containers may be placed in your home recycling or trash. Liquid, powder, and cream medications should remain in the original bottles with caps tightened. Accepted medications include over the counter, prescriptions, supplements, and pet medications. Never dump thermometers, sharps, or chemicals in a drop box.

Complete information on the Drug Disposal Program is available at Manitowoccounty.com/recyclingcenter or you can call the Recycling Center at 920-683-4333.



Pounds of Medications Collected per Year



CHRISTMAS LIGHTS

The Manitowoc County Recycling Center is accepting unwanted Christmas lights for FREE. Strings of lights are highly recyclable, even with the bulbs in them. Bring them to the Recycling Center Main Office at 3000 Basswood Road Monday-Friday between 7am and 4pm.

Replacing old lights with new energy efficient LED lights can help you save on your electric bill.

All string lights will be accepted as well as extension cords. Garland, wreaths, trees and other lighted decorations will not be accepted. Normal light bulbs, including spot lights, compact fluorescents, fluorescent tubes, and incandescent bulbs can be recycled but normal fees apply.

Visit the Recycling Center at Manitowoccounty.com/recyclingcenter or call 920-683-4333 to learn more about Christmas Light Recycling and similar programs offered in Manitowoc County.



RECYCLE YOUR HOLIDAY TREE

Manitowoc County residents and businesses may drop off their natural holiday trees at the Basswood Compost Site. Remove all ornaments, tinsel, lights, stands and storage bags from trees before dropping off. If your tree is more than 6 feet long, please cut it in half. The Basswood compost site is located at 3000 Basswood Rd., near the intersection of CTY P and R. Please call 920-683-4333 or visit Manitowoccounty.com/recyclingcenter for information.

According to the National Christmas Tree Association around 29 million natural trees are sold over the holidays. Many of these trees are recycled once their holiday usefulness is over. Used natural trees can be chipped and turned into wood mulch. Mulch is used for groundcover and erosion control in landscaping projects and trails. Another popular use is for constructing wildlife habitat. If properly placed in a backyard these holiday conifers provide shelter and protection for songbirds during the winter. Placed in loose piles at the edge of a woodland, these trees help many wildlife including birds, small mammals and even the animals that depend on them for food. Many sportsmen will construct these brush piles to attract small game or to create hunting blinds. Carefully placed piles on the ice in lakes can be used to create fish habitat once the ice melts and the trees sink to the bottom. Be sure to check for restrictions before building fish or wildlife structures.

Holiday trees may be taken for free from the Manitowoc County Basswood Compost Site during normal business hours. Whole trees will be set aside in a separate pile for those interested in using them.



TREE FOR A TREE

The Manitowoc County Recycling Center is assisting the City of Manitowoc Parks and Forestry Division to distribute vouchers for their Tree for a Tree Program. Throughout January 2020, City of Manitowoc residents will be able to receive a voucher for a free deciduous tree when they bring their natural Christmas tree to the Basswood Compost Site. Trees must be free of ornaments, stands, lights, bags, etc. Participants must come to the Recycling Center Main Office, open Monday through Friday between 7am and 4pm, before dropping off their tree. There are a limited number of vouchers available on a first come, first served basis with a limit of one per household to City of Manitowoc residents. Vouchers are redeemable at the Silver Creek Nursery from April 15 to May 15 for deciduous seedlings known as “whips”, which are about 3-4 feet tall, 2-4 years old, and ready for planting.

This program is part of an urban forestry grant through the WDNR to help regain some of the urban tree canopy which will be lost due to the Emerald Ash Borer.

LAMP RECYCLING

Light bulb recycling is one of the services provided by the Manitowoc County Recycling Center's ongoing electronics collection program. Some lamps, including fluorescent tubes, compact fluorescent bulbs and high intensity discharge bulbs, contain small amounts of mercury that can be harmful to human health and the environment when they are disposed of in the trash. Even incandescent bulbs contain lead, which is also a toxic metal. All the materials in these bulbs can be recycled. During 2018 the Recycling Center collected approximately 14,503 bulbs and 1,014 pounds of light ballasts from residents and businesses. Once received, the bulbs are carefully packaged for shipping to a specialized recycling facility where hazardous materials are safely removed. All the materials in these bulbs can be recycled without generating any waste. Even the hazardous materials, like mercury, can be recovered and reused.

Bring your burnt out light bulbs and ballasts to main office at the Manitowoc County Recycling Center. When transporting large amounts of fluorescent tubes secure them in boxes or by taping them together in manageable bundles using an easy release masking or painters tape (no duct tape).



| Item | Fee |
|--|---------------|
| 4 ft. Fluorescent Light Bulbs* | \$0.45 each |
| 8 ft. Fluorescent Light Bulbs* | \$0.55 each |
| Compact Fluorescent Light Bulbs* | \$0.45 each |
| High Intensity Discharge (HID) Light Bulbs (Including Sodium, Metal Halides, & Mercury Vapor)* | \$1.40 each |
| Incandescent, Flood and Spot Light Bulbs* | \$0.35 each |
| LED Bulbs* | \$2.80 each |
| Neon and UV lighting must call ahead | Quoted |
| Ballasts (non-PCB) | \$0.55 per lb |
| Ballasts (PCB) | \$1.00 per lb |

*There will be an additional charge for any broken light bulbs.

**Do not use duct tape to bundle fluorescent lamps together, use an easy-release tape like painters tape or masking tape.

WASTE TIRE COLLECTION RESULTS

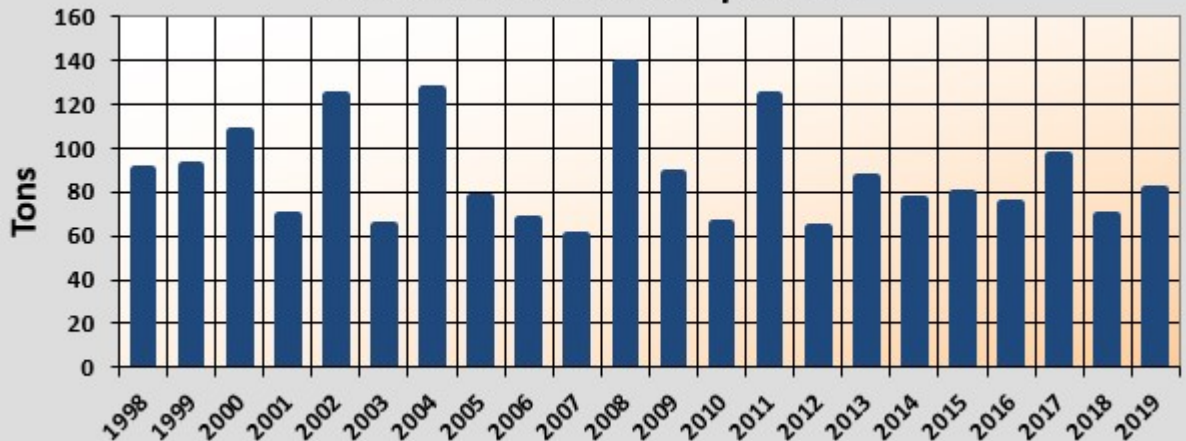
Manitowoc County residents and businesses brought in a total of 81.5 tons of waste tires in 2019. The majority of this was car and truck tires, though there were many other types, such as; bicycle, ATV, lawnmower, tractor, semi, and race car tires. The Waste Tire Collection started in 1998 and has collected 1925.5 tons of tires since it began. This collection typically has between 60 and 140 tons of unwanted tires annually. All the tires are shipped out to a reputable tire recycler that specializes in recycling tires.

Waste tires can be reused in a number of beneficial ways. They can be shredded into rubber chips and used as artificial turf or as a groundcover in playgrounds. Tire rubber can be incorporated into asphalt roads, athletic tracks and used in other rubber products. Depending on what other materials are in the tire they may also be used as a fuel source. When burned in specially designed incinerators the release of noxious smoke can be controlled. Nylon and steel that is commonly found in tires is also recycled.

The tire collection will resume in April 2020 and run through October. Watch for the 2020 guidelines and rates online or in the next newsletter.

We are often asked why the collection stops in winter. The collection is seasonal because tires are stored outside and can accumulate water and snow. When we ship the tires for processing, most of the water can be shaken out of the tires. However, if it is cold and there is ice in the tires, then the loads are significantly heavier and cost more. So, the tire collection is seasonal because this helps us keep our rates low.

Tons of Tires Collected per Year



RECYCLING DEPOT

The Manitowoc Recycling Center maintains a residential drop off area at the Recycling Center Main office located at 3000 Basswood Road. It is open Monday-Friday from 7am to 4pm, and Saturday from 8am to Noon. This site is intended for use by all county residents. There is no trash or garbage drop off at this location. Contact a local hauler or the Ridgeview Landfill for disposal of trash. Different municipal drop off sites may be more accessible to you depending on the city, township or village you are from.

General Drop Site Guidelines

- Place your recyclables in the bunker or receptacle labeled for that material.
- Remove any plastic bags or strings and take them home with you to place in your trash.
- Do not place nonacceptable items in the bunkers or receptacles.
- Do not place materials outside receptacles on the ground.
- Large loads of cardboard, paper or plastic can be placed on appropriate pile on the tipping floor.
- Use caution driving through the drop site and on the tipping floor.

VIDEO
RECORDING



IN PROGRESS

The recycling and compost areas are monitored for illegal dumping, littering, and other issues. Please follow all posted guidelines.

| | |
|---|--|
| <p><u>Paper</u> Includes newspapers, junk mail, magazines, computer paper, books with metal or plastic binding removed etc.. Paper should be clean and dry. No paper contaminated with food or oil. No paper coated with foil, plastic or heavy glue. No plastic/foil wrapping paper.</p> | <p><u>Plastic</u> Check for a neck. We only accept #1 and #2 bottles and jars. Remove the caps, rinse and flatten. No tub shaped containers or bottles that contained oil or pesticide (even if rinsed). No plastic wraps, films, bags, trays, pails, packaging peanuts, Styrofoam, or any other non bottle shaped item. Please do not tie milk jugs together or tie in plastic bags.</p> |
| <p><u>Glass Bottles</u> Any color glass bottle or jar can be recycled. Put into designated bunker. Remove lids or caps and rinse. No window glass, mirrors, light bulbs, clay, ceramics, drinking glasses or ovenware.</p> | <p><u>Cartons</u> Cartons include shelf stable and refrigerated containers for wine, milk, juice, cream, soy milk, soup, and egg substitutes. Drop off cartons with the plastic bottles. They should be emptied and flattened.</p> |
| <p><u>Cardboard</u> Should be clean and flattened. No soiled cardboard or cardboard coated with wax, tin, or plastic.</p> | <p><u>Cans</u> Tin, steel, and aluminum cans. Coated cans, foil, and pie tins are ok. Empty and rinse out food residue.</p> |



ELECTRONIC NEWSLETTER REQUEST

Are you interested in receiving current updates recycling programs in Manitowoc County? Join our electronic mailing list to receive our quarterly newsletter. Either call us at 920-683-4333 or email

jonreisenbuechler@co.manitowoc.wi.us and request to be added to our email distribution list. The recycling center will not give away or sell your information. You will receive our quarterly newsletter detailing news and information about the recycling center and related events.

SCRAP METAL DUMPSTER

The Recycling Depot now has a scrap metal dumpster available for your convenience. It is for clean scrap metal only, including steel, iron, copper, sheet/cast aluminum, tin, and mixed metals. Please remove excessive non-metal components.

- NO propane (or other) tanks
- NO electronics or appliances
- NO batteries or lamps
- NO garbage, plastic, wood, or rubber
- NO chemicals, gas, oil, or other hazardous wastes.



The Manitowoc County Recycling Center is operated by Ascend Services Inc. Formerly Holiday House of Manitowoc Inc.



The Manitowoc County Recycling Center is a business unit of the Manitowoc County Department of Public Works and is operated in partnership with the Manitowoc County Expo Center.

