

MRF TURF

Summer 2018

The Quarterly Newsletter of the Manitowoc County Recycling Center



IN THIS ISSUE

FREE WOOD MULCH!	1
HOME COMPOSTING	2
COMPOST SITES DROP OFF AREA	2
COMPOST PRODUCTS	2
SEASONAL TIRE COLLECTION	3
CLEAN SWEEP RESULTS	4
ELECTRONICS RECYCLING	5
LAMP RECYCLING	5
RECYCLING DEPOT GUIDELINES	6
ELECTRONIC NEWSLETTER REQUEST	6

FREE WOOD MULCH!

The Manitowoc County Recycling Center is offering free wood mulch at the Basswood and Woodland compost sites. This offer is due to a reduced demand for biomass fuel in the region and will continue until further notice. The normal charge for this material is \$8 per cubic yard. Our wood mulch is made from shredded brush brought in by residents. Many people use this wood mulch for a ground cover around plantings and flower beds or as a fill layer under more expensive specialty mulches.

The wood mulch texture has also changed. The current material has been double ground to 3-4 inches. This creates a finer texture that is more desirable for landscaping projects. It also reduces the odd "spears" that pass through the grinding screen when a batch is only ground once.

Basswood Compost Site

**3000 Basswood Drive
Manitowoc, WI
Monday – Friday: 7am to 4pm
Saturday: 8am to Noon**

Woodland Drive Compost Site

**4189 Woodland Drive
Two Rivers, WI
Monday – Friday: 10am to 6pm
Saturday: 8am to 6pm**

Guidelines

- You may load your own for free at either the Basswood or Woodland Compost Site.
- Loading is available Monday to Fridays from 7:30am to 3:30pm at the Basswood Site only. There is a small loading fee of \$2.00 per load for residents. Stop at the Main Office first. Loading is NOT available on Saturdays.
- Deliveries are available for \$30.50 per 6 cubic yard load within Manitowoc County.
- Businesses and farms that need large amounts should contact the Recycling Center at 683-4333 for details.



Mission Statement

To provide materials recycling and recovery services to the citizens of Manitowoc County and to keep the public informed about recycling issues.



Manitowoc County Recycling Center & Compost Sites
3000 Basswood Road, Manitowoc WI
920-683-4333

Manitowocounty.com/recyclingcenter





HOME COMPOSTING

Gardeners and homeowners, turn your household food scraps into rich compost for your garden or plants. Mix kitchen scraps and grass clipping with leaves and turn the pile occasionally until it breaks down. Not only does home composting provide excellent compost, but you can reduce the amount of materials going into your garbage. Large, 13-cubic foot compost bins with locking lids are available at the Recycling Center for only \$60.00 (tax included).

Stop by the Recycling Center at any time during normal business hours and take a look at our floor model. Educational resources for home composting are available as well.

COMPOST SITES—DROP OFF AREA

Both the Basswood Road and Woodland Drive Compost Sites are available for drop off of acceptable yard materials during the posted hours. Remove plastic bags and other unacceptable debris from the materials you drop off. Brush drop offs should be placed on the brush pile. Keeping your yard material drop offs clean and free of unacceptable items will help us create better compost products. When using the compost sites drive slow and watch for traffic. It is advisable to avoid using the compost sites during or after heavy rains since they can easily become rutted and slippery. Do not use the compost sites outside of the posted hours.

Accepted Items: Grass, leaves, flowers, plants, pumpkins, fruits, vegetables, garden waste, yard waste, brush, branches (not more than 6 inches in diameter or longer than 5 feet), clean woodchips, clean saw dust, and natural holiday trees.

Unacceptable Items: Stumps, ashes, animal waste, sod with soil, topsoil or dirt, rocks, gravel, lumber, garbage, large branches greater than 6 inches in diameter or longer than 5 feet.

Loads may be subject to inspection by Recycling Center staff. Illegal dumping is subject to fine per Manitowoc Code Section 6.17. Placing unaccepted items in an otherwise designated recycling container or pile is considered illegal dumping and is subject to fine. If you have questions about a particular material, call 683-4333 and ask.

BASSWOOD COMPOST SITE

3000 Basswood Rd, Manitowoc
 Mon-Fri 7am-6pm
 Sat 8am-6pm

WOODLAND COMPOST SITE

4191 Woodland Dr, Two Rivers
 Mon-Fri 10am-6pm
 Sat 8am-6pm

NEVER drop ashes off at the compost site!



COMPOST PRODUCTS

Wood mulch and compost are available at the Recycling Center Main Office during the posted office hours. Purchases must be made before loading. Note that the office hours are different than the drop off site hours. Loading is generally available Monday through Friday from 7:30am to 3:30pm.

Deliveries can also be set up within Manitowoc County. Call 920-683-4333 for more info.



RECYCLING CENTER OFFICE

3000 Basswood Rd, Manitowoc
 Mon-Fri 7am-4pm
 Sat 8am-Noon

SCREENED COMPOST PRICES

- 1 bushel: \$2.50
- 1 cubic yard: \$13.00
- 6 cubic yards including delivery: \$108.50

UNSCREENED COMPOST PRICES

- 1 bushel: \$0.50
- 1 cubic yard: \$1.50
- 6 cubic yards including delivery: \$39.50

WOOD MULCH SPECIAL

- Wood Mulch Free
- Loading Fee \$2.00
- 6 cubic yards including delivery: \$30.50
- See page 1 for details

TIRE COLLECTION UPDATE

The Manitowoc County Recycling Center has updated pricing and guidelines for the recently expanded tire collection. These changes were necessary due to the increased cost of processing large off road tires from agricultural and mining equipment. This collection has typically brought in a significant amount of off-road tires mixed in with on road tires from cars and trucks. Rather than significantly raising the rates for all incoming tires, the tires will now be separated into two groups with different prices.



The Manitowoc County Recycling Center recently expanded the tire collection to run from April through the end of October. Earlier events were limited to 2 weeks in September but recent facility changes have allowed us to accept them seasonally. This should provide a more convenient service for our community.

The Manitowoc County Tire Collection started in 1998 and has collected approximately 3.55 million pounds of waste tires since it began. Waste tires can be reused in a number of beneficial ways. They can be shredded into rubber chips and used as artificial turf or as a groundcover in playgrounds. Tire rubber can be incorporated into asphalt roads, running tracks and used in other rubber products. Depending on what other materials are in the tires, they may also be used as tire derived fuel at permitted facilities.

The DNR estimates that Wisconsin produces 5 million waste tires per year. Tires have been banned from landfills since 1995 because they take up too much space and their bulky size makes them hard to keep buried. Unfortunately, tires have often been illegally dumped along roadways or in illegal stockpiles. Aside from looking like a mess this can cause problems. Water accumulated inside the tires becomes a breeding ground for mosquitoes. If tire piles catch fire they can release large amounts of pollutants into the air, water and soil.

Help reduce the amount of tires being used by taking proper care of the tires on your car. Following the scheduled rotation and maintaining proper air pressure can help get more use out of each tire. Fixing alignment problems early can also save tire wear and extend their life.

For more information call the Recycling Center at 920-683-4333 or visit Manitowocounty.com/recyclingcenter.

Fees and Guidelines

- Pay in the Recycling Center Main Office **before** dropping off tires
- \$4.00 per car tire or smaller (5 tires or less)
- \$5.50 per standard truck tire (5 tires or less)
- 14.5 cents per pound (\$290 per ton) for road tires including:
 - Quantities of 6 or more tires
 - Semi tires
 - Tires on rims
- 19.5 cents per pound (\$390 per ton) for off-road tires including:
 - Agricultural equipment tires
 - Mining equipment tires
 - Mixed loads containing off road tires
- Bring your waste tires during the listed times for the Main Office
- Collection employees reserve the right to judge, based on tire size and quantity, whether a customer is charged on a per tire basis or by tire weight.
- Residents and businesses with dump truck loads or larger quantities of tires must call the Recycling Center before coming
- Rubber products that are not tires are not accepted

Waste Tire Collection**Location & Hours:**

3000 Basswood Road
Manitowoc

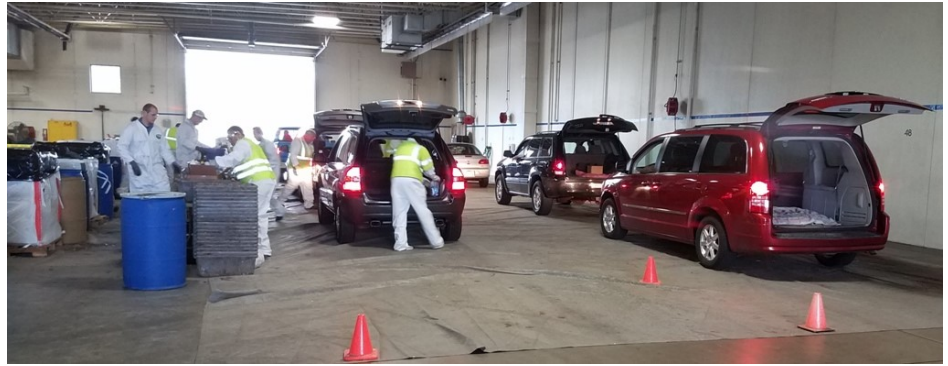
Monday—Friday
7am—4pm
Saturday
8am—Noon

Tires Accepted:

Car
Truck
Semi
Tractor
Motorcycle
ATV
Bicycle

CLEAN SWEEP RESULTS

The Manitowoc County Department of Public Works and Manitowoc County Recycling Center would like to thank all the participants and volunteers of the Hazardous Waste Clean Sweep program. With your help throughout the years the program has reached the 1 million pound milestone. Since the Manitowoc County Hazardous Waste Clean Sweep started in 1985, households and farms have turned in 1,012,978 pounds of unwanted chemicals! All of the collected items are properly recycled, neutralized or disposed of at special disposal sites or hazardous waste incinerators that render the materials harmless.



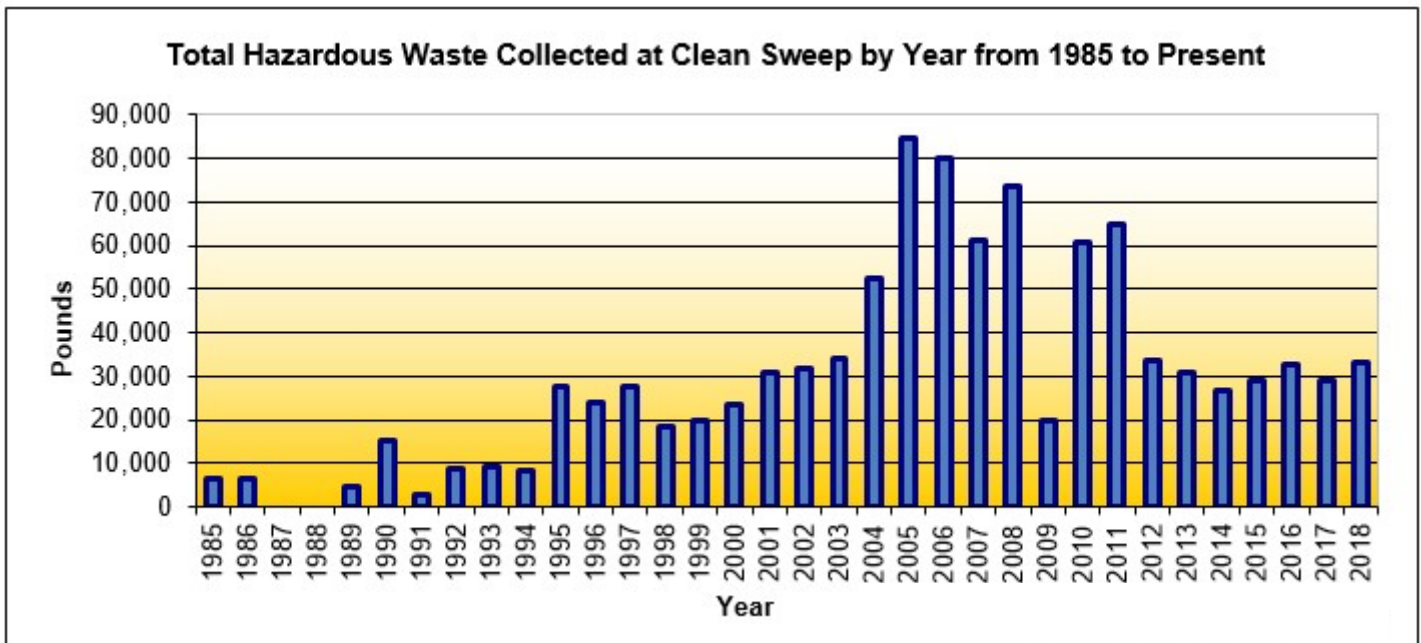
This year the collection had 464 households, 12 farms, and 9 businesses participate and collected a total of 35,862 pounds of hazardous waste. Households turned in 28,264 pounds of hazardous chemicals. Farms turned in 4,875 pounds. Most of the items turned in were old oil based paints and solvents, though a significant amount of pesticides were also dropped off.

The business portion of Clean Sweep served 9 local businesses who qualified as “Very Small Quantity Generators” under the program. These businesses brought in 2,723 pounds of hazardous waste. Businesses are offered a substantial discount when they bring their materials to the Clean Sweep event.

Many cleansers, home improvement products, automotive products and pesticides can be dangerous when stored or disposed of improperly. They can contaminate the soil, water, and air when spilled or illegally dumped. Improperly stored items could be involved in accidental poisonings of children and pets. The Clean Sweep Program provides an opportunity for households and farms to safely dispose of these materials for free and for eligible businesses to save on their disposal costs.

Clean Sweep is an annual collection typically held in mid-May. It is made possible partly through grant funding from the Wisconsin Department of Agriculture, Trade and Consumer Protection, a donation from the Ridgeview Landfill and volunteer labor. The Manitowoc County Recycling Center has a number of programs throughout the year that you can use to help our environment and clean up at home including Composting and Drug Disposal programs, an ongoing Electronics Collection, a Tire Collection as well as the Hazardous Waste Clean Sweep Program. To learn more about these and other programs visit Manitowoccounty.com/recyclingcenter.

2018 Hazardous Waste	
Category	Pounds
Pesticides/Poisons	4,607
Lead/Oil Based Paint	10,790
Caustics/Corrosives	835
Reactives	16
Solvents/Thinners	6,375
Waste Oil	3,000
PCBs	0
Aerosol Cans	2,010
Mercury	184
Dioxins	12
Other	435
Agricultural	4,875
VSGQ Business	2,723
TOTAL POUNDS	35,862



ELECTRONICS RECYCLING. The Manitowoc County Recycling Center has an ongoing electronics collection program. A variety of electronics are accepted including televisions, computer equipment, kitchen gadgets, electric tools. Items that cannot be accepted include Freon containing appliances like air conditioners, dehumidifiers, or refrigerators as well as bulky appliances like stoves, washers, or dryers.



It is important to recycle electronics for a number of reasons. They can contain hazardous materials that can enter the environment if disposed of improperly. Dumping or burning them can allow heavy metals and toxic compounds to infiltrate into the soil, air, and water. Heavy metals such as lead and mercury have the ability to leach out of electronic devices under certain conditions. These materials can cause a number of health problems in humans and wildlife. Electronics recycling helps recover reusable raw materials, conserves landfill space, and creates jobs.

Wisconsin's Electronic Recycling Law bans certain consumer electronic devices from landfills and incinerators and established a collection and recycling system in Wisconsin for households and K-12 public schools.

The Manitowoc County Recycling Center is registered with the Wisconsin Department of Natural Resources as a certified electronics collector. This means that ALL the electronics recycled through our program are sent to reputable recycling companies who guarantee the confidential destruction of any personal data remaining on your electronics, recycle or reuse all of the materials they receive, and are registered with the Environmental Protection Association and Wisconsin Department of Natural Resources.

All televisions and monitors are measured diagonally across the glass portion of the screen. Televisions and monitors must not be broken or stripped. Due to the increased health and safety issues associated with handling, storing, and transporting stripped electronics or broken televisions, these items may be refused or assessed an extra fee depending on the situation.

If you have questions, visit Manitowocounty.com/recyclingcenter or call the Manitowoc County Recycling Center at 683-4333.

Item	Fee
Flat panel TV or monitor—Small (less than 27")	\$10 each
Flat panel TV— Large (27" or more)	\$20 each
Microwave	\$10 each
CRT TV or monitor—Small (less than 24")	\$15 each
CRT TV—Medium (24" or more up to 36")	\$25 each
CRT TV—Large (more than 36")	\$35 each
Computer Processor	\$10 each
Other Electronics (includes: laptops, stereos, vcr/dvd, printers, scanners, cameras, and many other electric appliances)	\$0.25 per lb
Cell Phones	Free
Single Use Batteries (alkaline, lithium, button batteries sorted by type)	\$1.20 per lb
Rechargeable Batteries	Free

LAMP RECYCLING is one of the services provided by the Manitowoc County Recycling Center's ongoing electronics collection program. Some lamps, including fluorescent tubes, compact fluorescent bulbs and high intensity discharge bulbs, contain small amounts of mercury that can be harmful to human health and the environment when they are disposed of in the trash. Even incandescent bulbs contain lead, which is also a toxic metal. All the materials in these bulbs can be recycled. During 2017 the Recycling Center collected approximately 13,932 bulbs and 2,325 pounds of light ballasts from residents and businesses. Once received, the bulbs are carefully packaged for shipping to a specialized recycling facility where hazardous materials are safely removed. All the materials in these bulbs can be recycled without generating any waste. Even the hazardous materials, like mercury, can be recovered and reused.

Bring your burnt out light bulbs and ballasts to main office at the Manitowoc County Recycling Center. When transporting large amounts of fluorescent tubes secure them in boxes or by taping them together in manageable bundles using an easy release masking or painters tape (no duct tape).









Item	Fee
4 ft. Fluorescent Light Bulbs*	\$0.40 each
8 ft. Fluorescent Light Bulbs*	\$0.50 each
Compact Fluorescent Light Bulbs*	\$0.40 each
High Intensity Discharge (HID) Light Bulbs (Including Sodium, Metal Halides, & Mercury Vapor)*	\$1.35 each
Incandescent, Flood and Spot Light Bulbs*	\$0.30 each
LED Bulbs*	\$2.60 each
Ballasts (non-PCB)	\$0.55 per lb
Ballasts (PCB)	\$0.93 per lb
*There will be an additional charge for any broken light bulbs. **Do not use duct tape to bundle fluorescent lamps together, use an easy-release tape like painters tape or masking tape.	

RECYCLING DEPOT

The Manitowoc Recycling Center maintains a residential drop off area at the Recycling Center Main office located at 3000 Basswood Road. It is open Monday-Friday from 7am to 4pm, and Saturday from 8am to Noon. This site is intended for use by all county residents. There is no trash or garbage drop off at this location. Contact a local hauler or the Ridgeview Landfill for disposal of trash. Different municipal drop off sites may be more accessible to you depending on the city, township or village you are from.

General Drop Site Guidelines

- Place your recyclables in the bunker or receptacle labeled for that material.
- Remove any plastic bags or strings and take them home with you to place in your trash.
- Do not place nonacceptable items in the bunkers or receptacles.
- Do not place materials outside receptacles on the ground.
- Large loads of cardboard, paper or plastic can be placed on appropriate pile on the tipping floor.
- Use caution driving through the drop site and on the tipping floor.

<p><u>Paper</u> Includes newspapers, junk mail, magazines, computer paper, books with metal or plastic binding removed etc.. Paper should be clean and dry. No paper contaminated with food or oil. No paper coated with foil, plastic or heavy glue. No plastic/foil wrapping paper.</p>		<p><u>Plastic</u> Check for a neck. We only accept #1 and #2 bottles and jars. Remove the caps, rinse and flatten. No tub shaped containers or bottles that contained oil or pesticide (even if rinsed). No plastic wraps, films, bags, trays, pails, packaging peanuts, Styrofoam, or any other non bottle shaped item. Please do not tie milk jugs together or tie in plastic bags.</p>	
<p><u>Glass Bottles</u> Any color glass bottle or jar can be recycled. Put into designated bunker. Remove lids or caps and rinse. No window glass, mirrors, light bulbs, clay, ceramics, drinking glasses or ovenware.</p>		<p><u>Cartons</u> Cartons include shelf stable and refrigerated containers for wine, milk, juice, cream, soy milk, soup, and egg substitutes. Drop off cartons with the plastic bottles. They should be emptied and flattened.</p>	
<p><u>Cardboard</u> Should be clean and flattened. No soiled cardboard or cardboard coated with wax, tin, or plastic.</p>		<p><u>Cans</u> Tin, steel, and aluminum cans. Coated cans, foil, and pie tins are ok. Empty and rinse out food residue.</p>	

ELECTRONIC NEWSLETTER REQUEST

Are you interested in receiving current updates recycling programs in Manitowoc County? Join our electronic mailing list to receive our quarterly newsletter. Either call us at 920-683-4333 or email jonreisenbuechler@co.manitowoc.wi.us and request to be added to our email distribution list. The recycling center will not give away or sell your information. You will receive our quarterly newsletter detailing news and information about the recycling center and related events.

The Manitowoc County Recycling Center is operated by Ascend Services Inc. Formerly Holiday House of Manitowoc Inc.



The Manitowoc County Recycling Center is a business unit of the Manitowoc County Department of Public Works and is operated in partnership with the Manitowoc County Expo Center.

