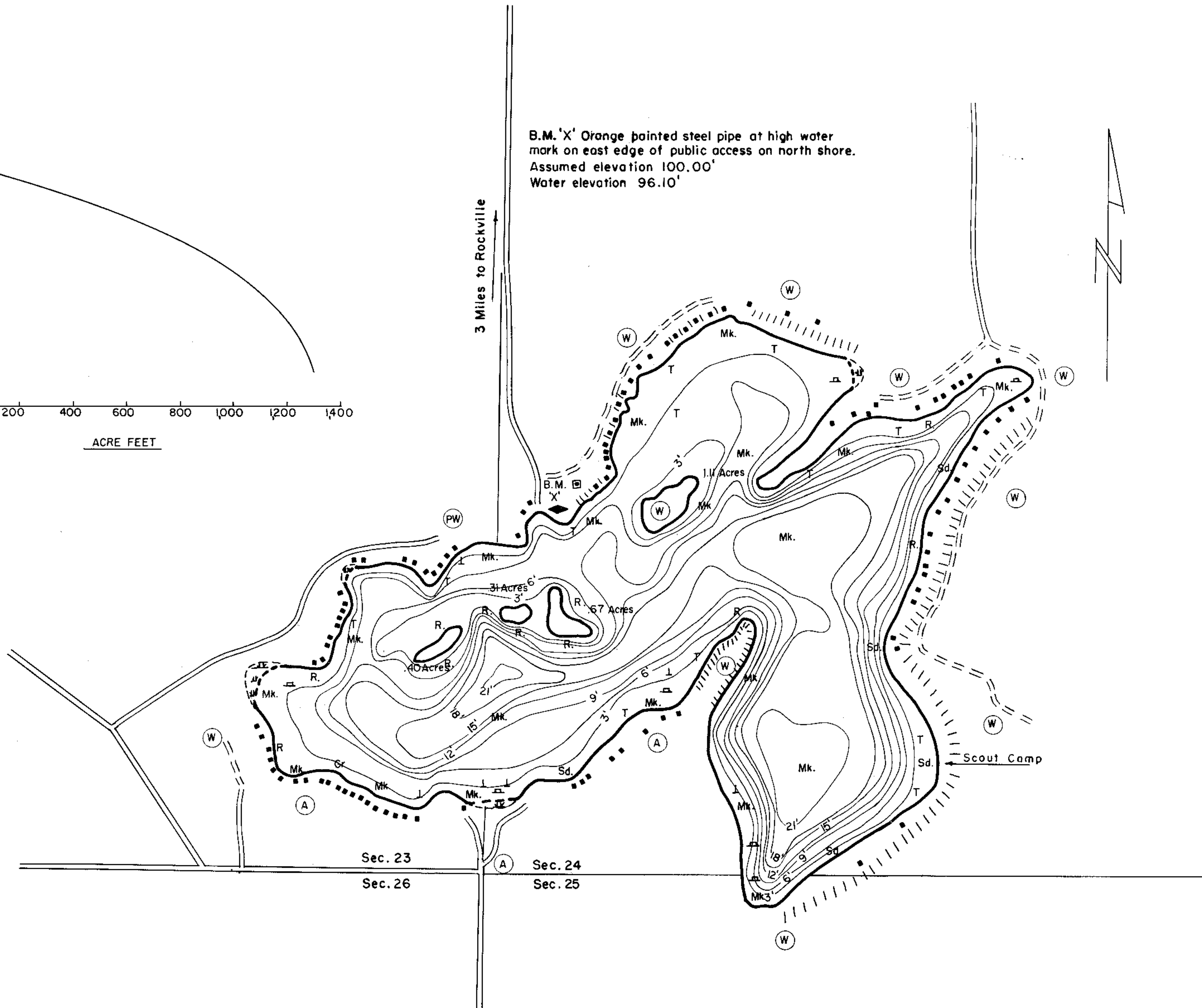


B.M. 'X' Orange pointed steel pipe at high water mark on east edge of public access on north shore. Assumed elevation 100.00' Water elevation 96.10'

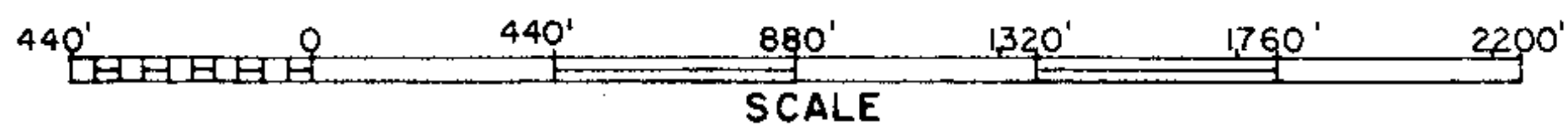


EQUIPMENT RECORDING SONAR MAPPED AUG. 1965
 MO. YR.

- TOPOGRAPHIC SYMBOLS
- (B) Brush
 - (PW) Partially wooded
 - (W) Wooded
 - (C) Cleared
 - (P) Pastured
 - (A) Agricultural
 - B.M. Bench Mark
 - Dwelling
 - Resort
 - (|||||) Steep slope
 - - - Indefinite shoreline
 - ⊞ Marsh
 - Spring
 - - - Intermittent stream
 - ≡ Permanent inlet
 - ≡ Permanent outlet
 - ⊥ Dam

WATER ELEV. 96.10'

- LAKE BOTTOM SYMBOLS
- P. Peat
 - Mk. Muck
 - C. Clay
 - M. Marl
 - Sd. Sand
 - St. Silt
 - Gr. Gravel
 - R. Rubble
 - Br. Bedrock
 - ⊥ Emergent vegetation
 - ⊥ Floating vegetation
 - Stumps & Snags



Access Access with Parking Boat Livery
 Field work by: H. Schmude, T. Corbett Drawn by: J. Roth

SPECIES OF FISH		
	Abundant	Rare
Muskie		
N. Pike	X	
Walleye		
L. M. Bass	X	
S. M. Bass		
Panfish	X	
Trout		

AREA 144.3 WITH ISLANDS
 141.81 ACRES
 UNDER 3FT. 24.2 %
 OVER 20FT. 7.6 %
 VOLUME 1302.39 ACRE FT.
 TOTAL ALK. 116 P.P.M.
 SHORELINE 3.57 MILES
 MAX. DEPTH 21 FEET

Source: Wisconsin Department of Natural Resources 608-266-2621
Cedar Lake – Manitowoc County, Wisconsin DNR Lake Map
Date – Aug 1965 - Historical Lake Map - Not for Navigation
A Public Document - Please Identify the Source when using it.